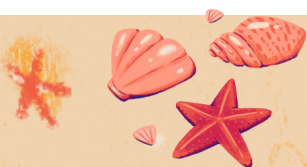




Further Afield Daytrips

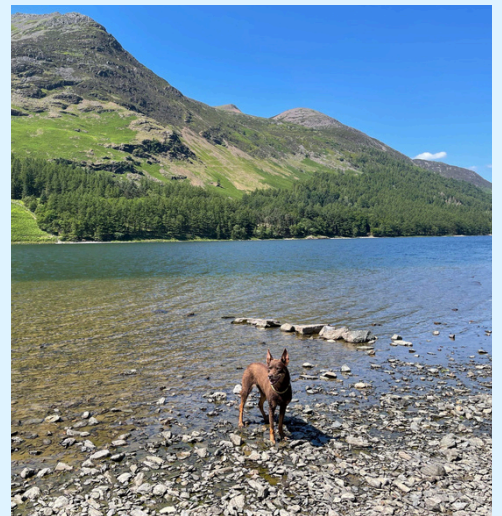


Allonby

**Allonby is a coastal village, about
a 15 minute drive from Silloth.
It has a long sandy beach, with stunning
views over to Scotland.
Visit the Twentymans Ice cream
shop for a treat.
Stop off at Jacks Surf Bar or
The Ship Hotel for some
home cooked pub food, or pop
into Wishers the sandwich deli.**

Buttermere

An hour's drive from Silloth but
worth it for the breathtaking
scenery. Take a walk around
the lake and stop off at the
Bridge Hotel or The Croft
House Farm Cafe.



Bowness on Solway

Only a 30 minute drive north from Silloth, brings you to this coastal village. Here you will find the end of Hadrian's Wall, stunning views across the Solway, The King Arms public House and The Solway Lounge Bistro.

Carlisle

A 30 minute drive from Silloth brings you to the shopping city of Carlisle. Shop until you drop, stop off for lunch in one of the many eateries and visit the Cathedral and castle. Visit the Tullie House Museum or take in a movie at the Vue cinema.

The Lakes Distillery

The home of The Lakes gin ,
whiskey and vodka.

Only a 35 minute drive from
Silloth, with tours, shop, bistro
and alpacas.

Dogs are allowed in the
courtyard, garden and
shop.



Dodd Wood 🐕

A 35 minute drive brings you to

Dodd

*Wood. This hidden gem has
several*

*walking trails for you to follow,
stunning views and The Old
Sawmill Tearoom.*



KESWICK 🐕

The market town of Keswick is a 40 minute drive from Silloth.

With shopping, Scenic walks around the lake, boat trips, and Hope Park with its crazy golf and dog friendly cafe.



Lake District Wildlife Park

A 35 minute drive from Silloth.

Book an experience, enjoy a keepers talk, stop off at the cafe and visit the shop. Play areas for the little ones and space for picnics too.



Whinlatter Forest



A 45 minute drive from Silloth, this forest has numerous walking trails, including the hunt for the Gruffalo and Zog.

GoApe through the trees, dine in Cafe Ambio and walk alpacas. Hire Segways or take a bike ride.



Gretna Green



A 45 minute drive brings you to Gretna Green, where you can visit the Marriage Museum and the Blacksmith's Shop. Take a stroll around the Sculpture Garden and take on the challenge of the courtship maze.

THE DOVENBY SHIP

A 30 MINUTE DRIVE FROM SILLOTH, THIS
RESTAURANT SERVES GENEROUS PORTIONS
OF THEIR EXTENSIVE MENU.
CALL THEM ON 01900 823692
TO BOOK A TABLE.

THE JOINERS ARMS

THIS DOG FRIENDLY PUB IS ONLY A 20
MINUTE DRIVE FROM SILLOTH.
A FANTASTIC MENU SERVED IN A
FRIENDLY ENVIRONMENT..

The Near Boot Inn

This dog friendly pub is a 50 minute drive from Silloth, but well worth the journey. Serving outstanding food in a welcoming environment, with the best carvery on a Sunday.

call them on 01228 540100

The Old Ginn House Inn

Take a 35 minute drive along the coast to this modern restaurant.
Call them on 01900 64616

Maryport

A 20 minute drive along the coast brings you to this fun-filled town. With an aquarium, crazy golf, pirate play area, Go Karting, pubs, restaurants, shops, little ones climbing wall, harbour, plus museums and a golf course.



Grune Point

You can either challenge yourself to the walk or park at Skinburness and make your way to Grune Point.

This is a sandy/shingle beach, great for peaceful walks with the furry one.



The Lowther Arms



Just a 10 minute drive along the coast brings you to Mawbray.

The Lowther Arms serves homemade food, everyday, is dog friendly, and has a playpark just outside.

Roman Museum

Maryport

This small museum sits on the outskirts of Maryport. This Museum houses the Senhouse Collection of outstanding Roman objects from the adjacent fort.

