



# House Handbook



Address : 1 Bridge View, Silloth, Wigton, CA7 4AP

Contact phone number: 07387 113918

Wi-fi : vodafone9FF7A3

Wi-Fi password : b9LbRRRa3YN367fN

(or scan the QR code)

water stopcock : games room

Electric Fuse Box : games room

Boiler : Games Room

Appliance Instructions : hallway drawers

First Aid Kit : hallway drawers

Bulbs and batteries : hallway drawers

# Wi-fi Information

To connect your device to the wi-fi, either scan the QR code in the hallway or input the details below.

Wi-fi : vodafone9FF7A3

Wi-Fi password : b9LbRRRa3YN367fN

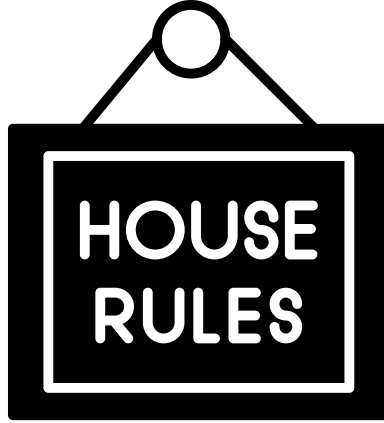
(or scan the QR code)

Lookout Room : If you have no signal you can connect to the booster using the same details as above, except it will be for the extender.

Captain's Quarters : If you have no signal you can connect to the booster using these details:

Seagreen View - extender

Password: seagreen (no capitals)



1. No smoking or vaping
2. No candles or burners
3. No deep fat fryers
4. No use of 3<sup>rd</sup> party equipment, e.g hot tubs
5. No drug use
6. No charging of electric vehicles, e-scooters, e-bikes
7. Children are not to be left alone in the house
8. Do not exceed 10 guest + 2 infants house limit

To take a look at our full terms and conditions - click the link below...

[CLICK HERE](#)



There is room for 3 to 4 cars on the driveway to the front of the house.

There is room for an extra car on the pebbles to the front of the house, in front of the family room window.

For extra parking, please find an appropriate place in town.

Please do not park in the turning circle to the side of the house or on the road as delivery trucks need access to the golf club.

Instructions for multi-fuel burner.  
(Sitting Room)

1. Open the door using the silver handle (be cautious when the fire is lit as this can become warm, gloves are provided).
2. Place logs into base of log burner.
3. Then build a tower of kindling on top of the logs.
4. Then place firelighters on top of the kindling.
5. Wearing the safety glove, light the firelighters and leave the door slightly open for a few minutes for it to catch.
6. Close the door and push the lever below the door to the middle position, allowing air in.
7. Once the fire is substantial, then you can calm it down by moving the lever to the left.

Please use the fire guard when in use as the door can become hot and always use safety gloves during operation.

After use, leave the door open and allow to cool fully for 24 hours before cleaning. If using the log burner the day before check out, please leave for our ladies to clean.

If cleaning: please use ash bucket, and bag and tie ash before placing into regular waste bin.

Any queries, please email us on [seagreensilloth@gmail.com](mailto:seagreensilloth@gmail.com).

Do not let children or animals near the lit fire.

If the Carbon Monoxide alarms sounds, then please leave the house and call us on 07387 113 918.

NOTE : firelighters, kindling and matches are stored in the footstool in the family room.

## Heating Controls.

The thermostat is located in the hallway.

To activate the thermostat, turn the dial, this will increase or decrease the temperature.

The temperature to the right, is the current temperature of the house. The temperature to the left, is the desired temperature.

There is a boost button located at the top of the thermostat which will turn on the heating for a short period of time.

We do ask that you lower the temperature when leaving the property, so as to conserve power and reduce environmental damage.

Any problems, please email us on [seagreensilloth@gmail.com](mailto:seagreensilloth@gmail.com).

There is a booster for the hive system plugged into the snug. If this socket is turned off then the heating cannot be controlled – if the thermostat registers no signal, send us a message and we will help.

## TVs, Sky and Apps.

The sitting room TV has SKY TV, press the house button on the Sky remote control, this will override the current source.

We cannot provide a pin code for restricted programmes.

Netflix and Disney plus are both available on the sitting room TV through the Sky account– just select the Seagreen account profile.

All other smart TVs have Netflix, access through the app.

Please sign out of any personal accounts before check out.

## Coffee Maker Instructions. (Tassimo Machine)

Turn on at the wall socket.

Fill tank at the back of the machine with water.

Lift front lid and place inside a pod. (if making coffee, then the milk pod goes first.)

Close lid.

Place glass under spout, if using a glass mug, remove the base drainer so it fits.

For milk pod: choose temperature by pressing thermometer on the screen and then press centre button to start.

For coffee pod: choose temperature by pressing thermometer, choose size by pressing on the cup, choose strength by pressing the desired coffee bean. Then press the centre button to start.



## Hob Instructions.

The controls are touch screen. Press the on button to activate, a red light should appear to let you know it is on. (just keep your finger on it until it goes red)

Pressing the + and – buttons will activate the individual rings.

Please ensure these are all turned off when you have finished cooking and be aware that the rings remain hot after use for a period of time. The H/h illuminated lets you know it is still hot.

## Oven Use.

The top oven can also be used as a grill whereas the bottom can only be used as an oven.

The 2 dials to the left control the bottom oven, whereas the 2 to the right control the top oven.

The dial to the left of each pair chooses the function, whereas the dial to the right chooses the temperature.

Return the dials to the upright position when finished cooking.

N.B If the power to the oven is turned off, the clock needs to be set before the oven can be used.

## Breadmaker: Instructions.

Remove the metal tin by turning anticlockwise until it releases.

Measure 270ml of water (1.5 cup) into the tin.

Add 2.5 tbsp of skimmed milk powder. If this is not available use milk.

Add 2.5 tbsp sunflower oil. If not available use melted butter.

Add 2.25 tbsp sugar.

Add 1.25 tsp salt.

Add 432g strong bread flour to cover the first ingredients.

Add 1.25 tsp fast action yeast.

Place the metal tin into the bread maker and turn clockwise until clicks into place. Close plastic lid and plug in.

Press the menu button until display says programme 1.

Choose loaf size 1.5lb.

Press start button.

This programme takes about 3 hours. It will beep to let you know it has finished.

The tin may be hot so use oven gloves to remove from the breadmaker. Turn anticlockwise to release.

Now tip the metal tin upside down and shake. This may take a few minutes as it has to release from the paddle at the bottom. Do not use any implement to try to force out the bread.

Once you have shook out the loaf, the metal tin should be rinsed in water, dried and replaced into the breadmaker.

## Washing Machine Instructions.

Turn the dial to the desired programme. (we like the daily quick cycle)

You can alter the spin rate or temperature with the buttons to the right of the dial.

Click start and the programme should commence.

At the end of the programme 'end' will be displayed.  
Turn the dial to 'off'.

## Tumble Dryer Instructions.

Turn the dial to desired setting (we like gentle care because it prevents creasing)

Press the start button.

The dryer has a sensor and will stop when your items are dry.

After each use, please empty the filter and the water tank. (the filter can be seen when the door is open, to the bottom. The water tank is where you would place your detergent in a washing machine.)

## Gas Fire Instructions – Lookout Bedroom.

Remove the bottom grate.

Push in the right hand dial and turn to the left, 90 degrees, whilst pressing in. Hold for a few seconds- you should see a pilot light.

Now turn all the way to the left.

The fire should light, if it doesn't return to instruction 2 and repeat, as it can be a little temperamental.

Adjust the temperature by using the dial to the left.

To turn off, turn right dial all the way back to original position.

Whilst in use, please use the fire guard, which is provided, and do not leave the fire lit whilst sleeping or leaving the property.

If the Carbon Monoxide alarm is activated, please ensure the fire is switched off, open the windows and then leave the room, closing the door behind you. Email immediately: [seagreensilloth@gmail.com](mailto:seagreensilloth@gmail.com) or call us on 07387 113918.

Do not leave children or pets around the fire when it is lit.

# *Our Cabin*

- The cabin will not be locked on your arrival.
- The indoor lights are switched on via the plug socket under the bench by the door.
- The outdoor lights are switched on to the left of the door on the outside.
- The firelighters and matches are in the sitting room.
- The charcoal is in the barbecue cabin.
- Tin plates, cups, cutlery and pans are stored in the footstool inside the cabin.
- Extra supplies: if you need extra charcoal or firelighters, then these are sold in Jaybees, Co op or Spar.
- If the carbon monoxide alarm goes off - open the door and window and move outside until the alarm turns off.
- Please so not leave children or pets alone in the cabin.
- The person in charge of the fire pit cannot be under the influence of alcohol.
- Please use gloves at all times when using the fire pit.

## *Cabin Instructions.*

- 1.Place charcoal and firelighters into the fire pit bowl.
- 2.Using the gloves, light the firelighters.
- 3.We have found that leaving the door or window open helps to build the fire.
- 4.Leave it burning for about 15 minutes, and then you are ready if you wish to cook food.
- 5.When cooking food, it is advisable to use the round cooking mat to prevent burning the food.
- 6.Cleaning: leave for 24 hours before cleaning out the fire pit bowl, tip the cold ash into a bin bag and place this into the regular waste bin.

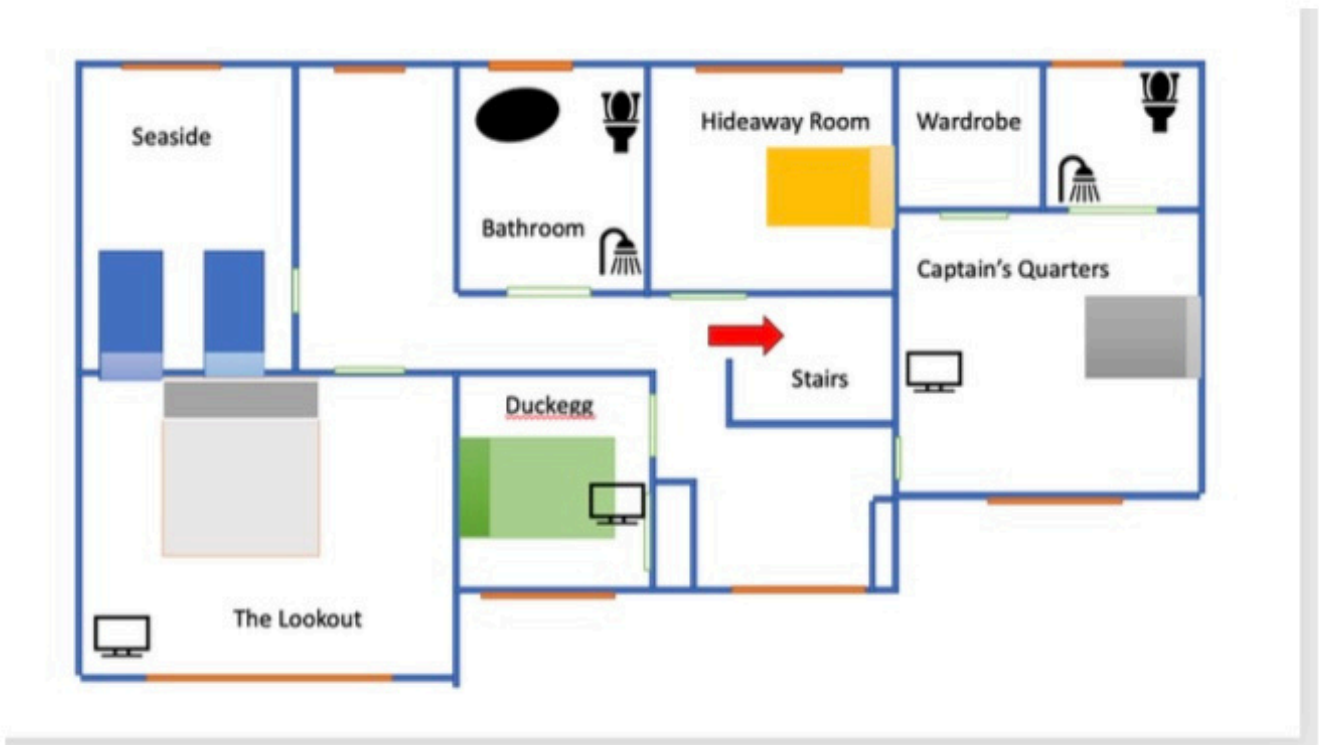
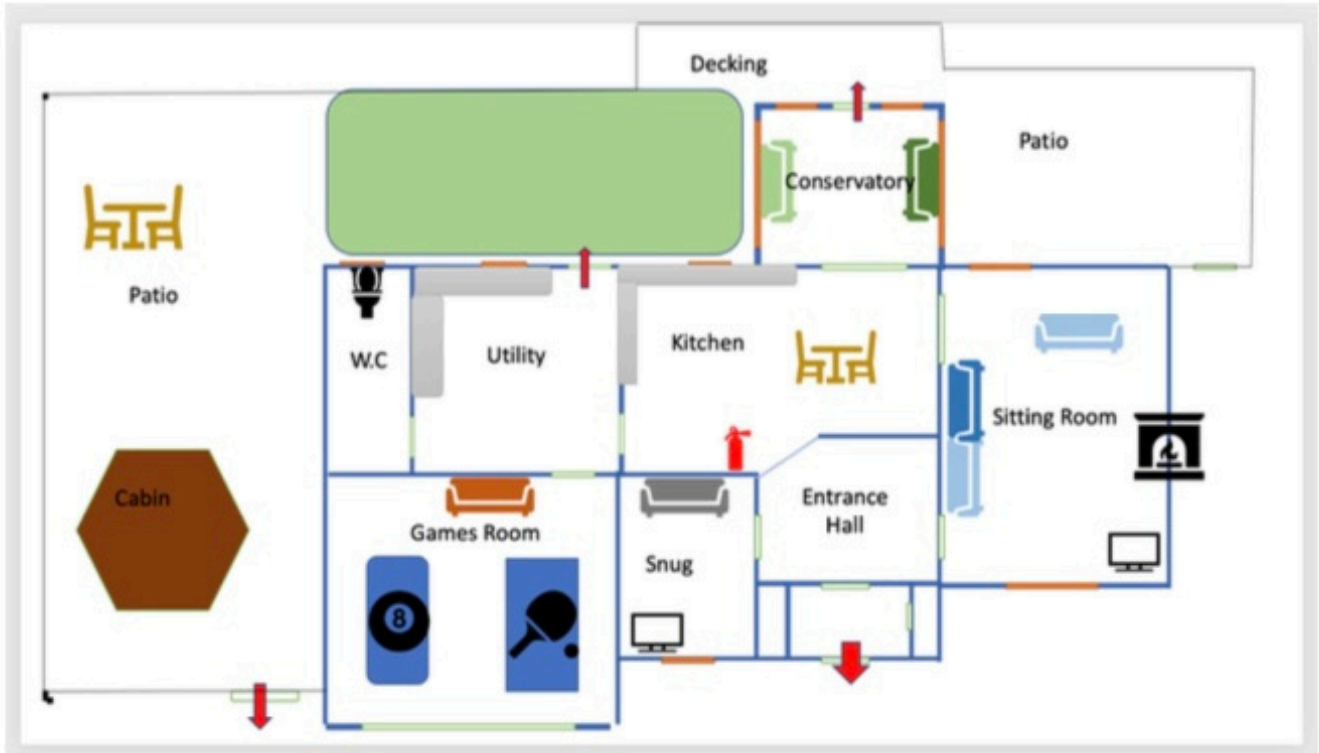
If using the fire pit the day before check out - please leave for our ladies to clean.

NOTE : Please do not use any lighter fluid in the fire pit.

We have a watering can of water for stray sparks and also our fire sand filled mouse if needed.



# Floor Plan





# Supplies for your stay



- logs, kindling, firelighters, matches, charcoal
- Tea, Coffee, Sugar, Milk
- Toilet Rolls
- Handwash
- Washing up liquid and dishwasher tablets
- Washing Pods
- Dog Poo bags
- Dog biscuits
- Bubble Bath + Shower Gel
- Salt and Pepper
- Kitchen towel + scourer + cloth

For a full list of supplies and equipment in the house, click the link below...

[CLICK HERE](#)



## Useful Links...

