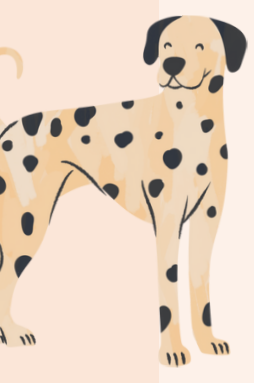
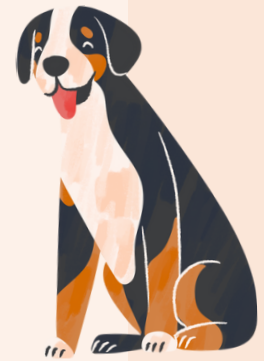


Furry Guest Handbook

seagreensilloth@gmail.com

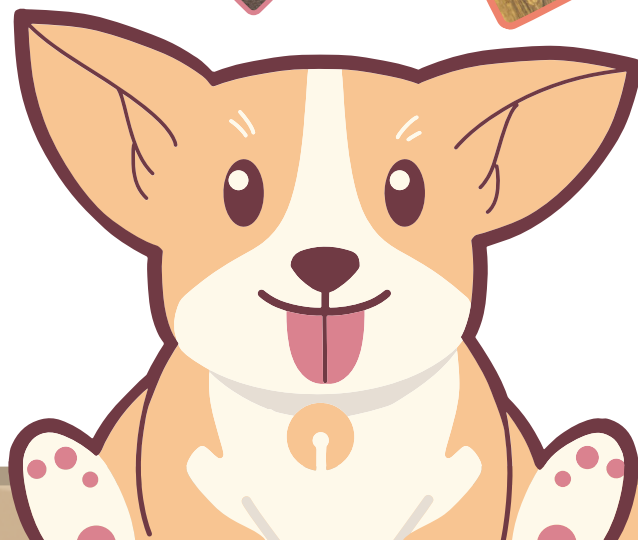


It's their holiday too...

At Seagreen we understand that our furry friends are part of the family and that's why we truly welcome them.

Seagreen welcomes up to ten dogs with no restriction on size, age, breed or drool.

The furry ones are welcome to explore every room and nap wherever they choose.





Home from Home...

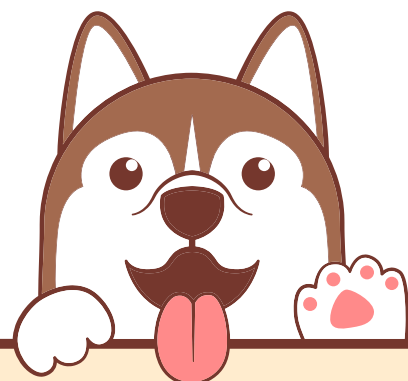
A fully enclosed garden with lighting for late night toilet breaks and a hose for sandy paws.

Hard flooring downstairs and the master bedroom too.

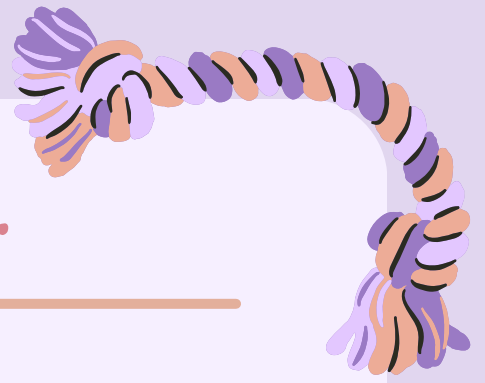
A log burner in the family room and the firepit in the cabin to keep the furrries warm.

Full size fridge-freezer to store their food.

Parking for 4 cars, so easy to get the furrries to and from the cottage.



Doggo Supplies...



Bowls

Beds

Blankets

Dog Towels

Toys

Dog crate

ID Tags

Poo Bags

Biscuits

Welcome Basket

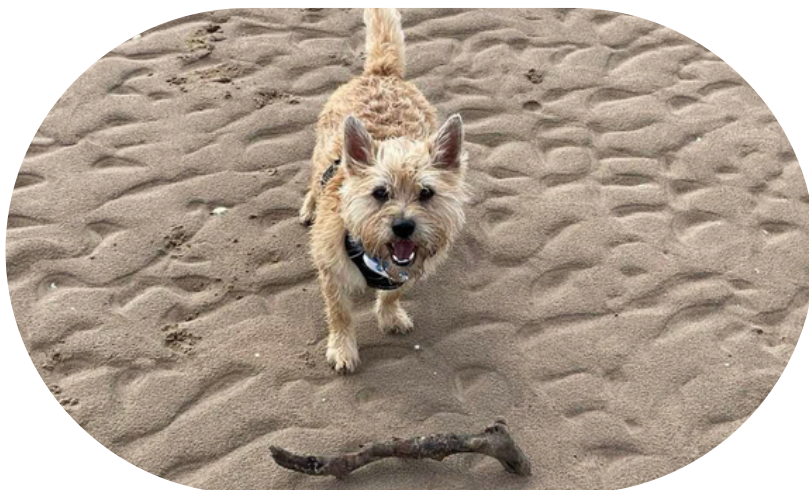
Paddling pool



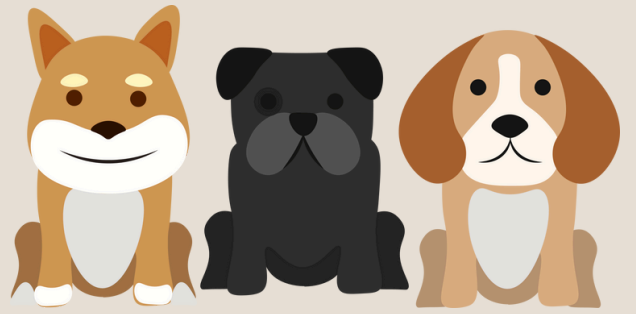


Welcome Basket

Doggos get their own welcome
basket at Seagreen,
With biscuits, treats
and their own toy to take home.



Silloth



Bessie's Diner

Winter's Post office has a dog friendly diner where you can enjoy tea and cake with your furry one.

Wolf-iz dog treat shop

Open Monday to Saturday, this dog treat shop has something tasty for every furry one.

Dog Friendly Beach

Silloth beach is dog friendly all year round and quiet even in summer, and it's just a 5 minute walk from Seagreen View.

Fairydust Tearoom

This tearoom is totally dog friendly and serves Puppachinos, cooked sausage and lots of cuddles for the furry ones.

Amusement Arcade

The arcade is totally dog friendly and serves doggo ice cream in their diner.

Cumberland Inn Pub

This local pub welcomes dogs into the bar area where you can enjoy a home cooked meal, have a few drinks with friends or challenge others to a game of pool.

Balmoral Pub

This pub serves drink, offers regular entertainment and even shows the footie.

Community Green

The town green is a great space for games of chase and fetch.

Promenade

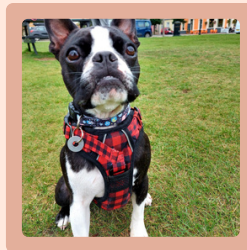
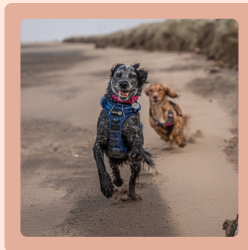
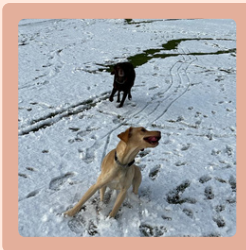
The seafront in Silloth stretches for miles so you can take the furry one for a scenic walk every day.

Sugar Cocktail Bar

This cocktail bar serves delicious cocktails and street food.

Albion Inn

This homely pub serves beer, spirits and soft drinks, plus they show the footie matches,



Daytrips

Mawbray - 10 mins

Take a short drive along the coast to this small village and visit the dog friendly beach and local pub - The Lowther Arms.

Whinlatter Forest - 40 mins

Take the furry one on adventures in the forest and then stop at the dog friendly cafe or pop into the shop

Dodd Wood - 40 mins

Follow the trails through this scenic wood, take in the views and let the furry ones explore.

Buttermere - 50 mins

Take the stunning walk around the lake and then stop off at the dog friendly pub and cafe.

Keswick - 40 mins

With scenic lakeside walks, shopping, and dog friendly Hope Park with cafe, this is a perfect outing for the furry ones.

Allonby - 10 mins

Just a short drive along the coast, Allonby has a dog friendly pub, beach and green.

Grune Point - 1hr 20 walk

Take the walk from Silloth to Grune Point, or drive half way and walk the rest. Total peace on this dog friendly corner of Cumbria, with beach walks to explore.

Noble Knott - 40 mins

This hidden gem has exciting trails with great views. Great if your furry one likes peace and quiet.

Crummock Water - 50 mins

Take this circular walk around the lake and then stop off at Buttermere for the dog friendly pub.

The Near Booth Inn - 40 mins

This dog friendly restaurant in Carlisle serves the best carvery you can imagine.

The Joiner's Arms - 15 mins

This pub in Newton Arlosh serves the most incredible meals and the doggos can come too.

Why Book A Stay At Seagreen View?



Because the furry ones are truly welcome