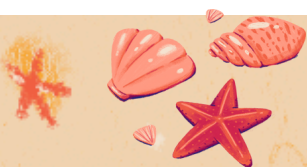
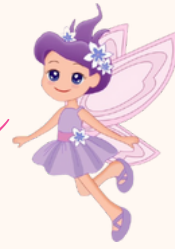




Things to do In Silloth



The Fairydust Emporium



This magical tearoom welcomes all the family, especially the furry ones. Serving breakfast and lunch everyday, Choose from home cooked food, indulgent desserts or treat yourself to a unicorn sundae.

Phone Number: 016973 31787.



The Bank

Tapas Restaurant

This Tapas Restaurant serves Spanish cuisine. We recommend ordering two dishes per person and sharing in true Tapas style. Enjoy a cocktail in the holiday atmosphere and be sure to leave room for dessert. Please book your table in advance as they are very popular

Open Thursday to Sunday Evenings.

Call them on : 016973 34290



Silloth Cafe

This seaside cafe sits right by the Green. Open everyday from 12pm, with the option to takeaway, eat in or delivery. Offering traditional fish and chips, or burgers and kebabs.

Call them on: 016973 31319



Stella's Bistro Restaurant

This bistro restaurant sits in Greenview Guesthouse.

Take pre-dinner drinks in the parlour, and then dine in the intimate restaurant.

Tel: 016973 31743

SUGAR

Cocktail Bar



Sugar Cocktail Bar overlooks the Green in town and serves drinks and street food.

Choose from cocktails, beers, wines and spirits plus tasty food. Doggo friendly too, so take the furry one along.

The Ice Cream Factory



For every kind of ice cream you could wish for, pop in to the Ice Cream Factory. Choose your cone, flavour, topping and sauce, add a flake or a wafer and enjoy.

Mario's Of Silloth

**Mario's offer a takeaway and delivery service .
Choose from pizzas, burgers, chips and lots more.
call them on : 016973 34242
open everyday from 12 midday.**

Star Fish Cafe

**Mario's now offers a dine in service at The Star
Fish Cafe in town. summer season only.
Enjoy Mario's with a view over the Green.**

Berry's Bakery

*For cakes, bread, biscuits and pies, pop
to the bakery in town.*



*Looking for a celebration cake, send
Beckie a message and order one of
her delicious creations.*

Tel: 016973 31386

The Golf Hotel

**Open every day, this hotel serves
food and drinks with stunning views
over the Green.**

Tel: 016973 31438

The Balmoral Hotel

THIS FAMILY FRIENDLY PUB SITS IN TOWN

OVERLOOKING THE GREEN.

DOG FRIENDLY TOO, SO THE FURRY ONE CAN JOIN THE FUN

The Rugby Club

This club is open to everyone during weekends and serves drinks in a relaxed environment.

Dog friendly too.



The Cumberland Inn

This pub serves homemade food and drinks in a welcoming environment. Family friendly, including the furry ones, with a log burning fire, beer garden and pool table. Amazing Sunday lunches and puddings from a time gone by.

TEL: 016973 31431

Mrs Wilson's **Coffee House**



This coffee house has the best spot in town. Choose from a menu of home cooked food along with delicious cakes. With outdoor seating and views over the Green.

Nº 17 *Deli Cieux*

This Deli is open Mon-Sat until 2pm.

Call : 016973 32458 to place your order
then pop round to collect.

Offers Baguettes, Paninis, Wraps and
lots more with filling sto suit everyone.

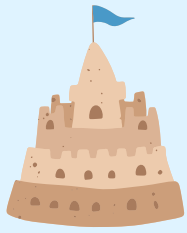


K.L. EXPRESS
The Local Chinese Takeaway
closed Tue & Wed
Call them on 016973 33033

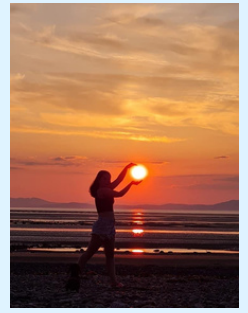
The R.A.F.A.



**Pop over to the R.A.F.A overlooking the seafront for a drink with
family and friends. Sign in, pay 50p person and then relax.
Visit in the evening for great sunset views and catch up with the
locals.**

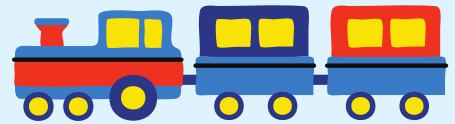


Silloth West Beach



Follow the road past the port to get to this sandy beach. Dog friendly all year round and great for sandcastle building and paddling.

There is a small car park if you prefer to drive to this unspoilt beach. Perfect for stunning evening sunsets with great views over to Scotland.



Amusement Arcade



Looking out over the sea, this dog friendly amusement arcade offers lots of family fun. From fruit machines, to air hockey, or the chance to win a prize, take a ride on Thomas the train or watch the little ones on the merry-go-round.



Open throughout the school holidays and weekends from Feb-Oct.

The Green



Silloth Green is perfect for family picnics and walks for the furry ones. The little ones can enjoy the splash pad in summer and explore the pirate ship play area. Take in the views from the pagoda or enjoy a stroll to the tennis courts and football pitch.

The Fairy Trail

Head into the woods on the Green and go in search of the little folk living in the trees. Keep an eye out for the wishing tree and the hidden playground. Venture in at dusk and spot rabbits as they explore.

FUNFAIR

IN SUMMER, THE FAIR COMES TO TOWN AND IS OPEN THROUGHOUT THE HOLIDAYS. WITH LOTS OF FUN RIDES TO CHOOSE FROM, AND FUNFAIR TREATS AND STALLS, IT'S GREAT FOR ALL THE FAMILY. THE FAIR SITS ON THE SEAFRONT, NEXT TO THE LIFEBOAT STATION.

The Big Fella

The Big Fella overlooks the seafront.

Ray Lonsdale sculpted the structure for Peter Richardson, who wanted to make the people of Silloth smile.

Pop along and say hello, and take a photo with the Big fella and his dog.



Soldiers in Silloth.

Come and see this exhibitions of
toy soldiers. This is a private
collection and well worth a visit.

The Motorcycle Museum

**This museum is perfect for the
motorbike enthusiast.**

Pop in and say hello.

Solway Holiday Village

Open Spring through to Autumn

**Arcade, Restaurant and Leisure Centre
call 016973 31236 for
information on day passes**

STANWIX HOLIDAY PARK

***Purchase a day pass at Stanwix Park and
enjoy all their facilities for the day,
including swimming pool and
entertainment.***

Book online or pop over.

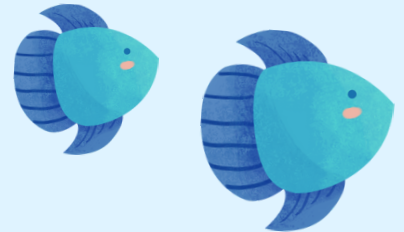
Promenade

Enjoy a walk along the seafront, taking in the sea views.

A Prom that goes on for miles, starting at the funfair and ending at Skinburness.



Perfect for dog walking.



GET ACTIVE...

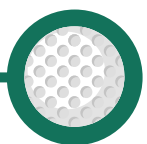
M.U.G.A.

This multi use games area can
be hired by the hour.

Contact Stephen on
016973 32706

GYM

The gym is open every day
and sits behind the M.U.G.A
Call Mavis on 07517 098777



SILLOTH GOLF COURSE



This highly rated links golf course is a must
for every golfer,

We can book your tee time too.

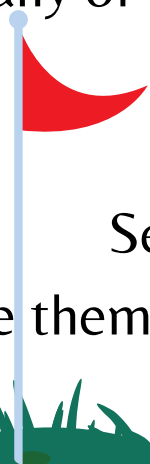
Dine in the Leitch Lounge for
breakfast, lunch or evening meals.

Call them on : 016973 31304

The Leitch Lounge and Restaurant.

The Leitch Lounge at Silloth
Golf Course serves pub favourites,
alongside fine dining.

Open to members and those playing the course,
any of our golfing guests are welcome to pop
in for food and drinks.



Serves breakfast, lunch and dinner.

Give them a call on : 016973 32676 to book a table.



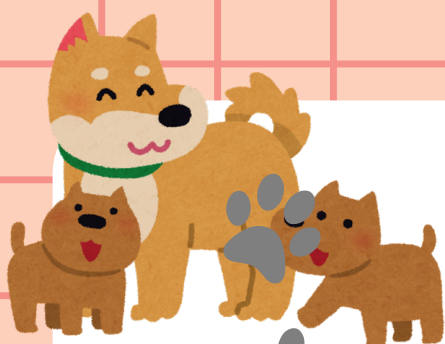
Let's Go Shopping...

Jaybees - sells everything you could ever need. Toiletries, charcoal, biscuits or toys - they have it all.

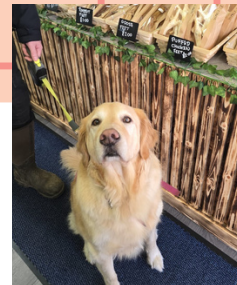
Co-Op and Spar for all your shopping essentials.

Kirkup Butchers - pick up all your barbecue supplies.

Silloth Pharmacy for those little hiccups during your holiday



Wolf-lz



Natural Dog Treat Shop

This natural dog treat shop has everything from ears, legs and even crocodile skin.

Closed on Sundays

Winter's Post Office



WINTER'S IS NO ORDINARY POST OFFICE. POP IN FOR YOUR USUAL POST OFFICE NEEDS, PICK UP SOME SOUVENIRS, TAKE A SEAT IN BESSIE'S AND ENJOY TEA AND CAKE OR SAFELY WITHDRAW CASH.

OPEN EVERY DAY FOR ALL YOUR POST OFFICE NEEDS.

DOG FRIENDLY BOOTHS AVAILABLE.

